

FortiClient Download Guide

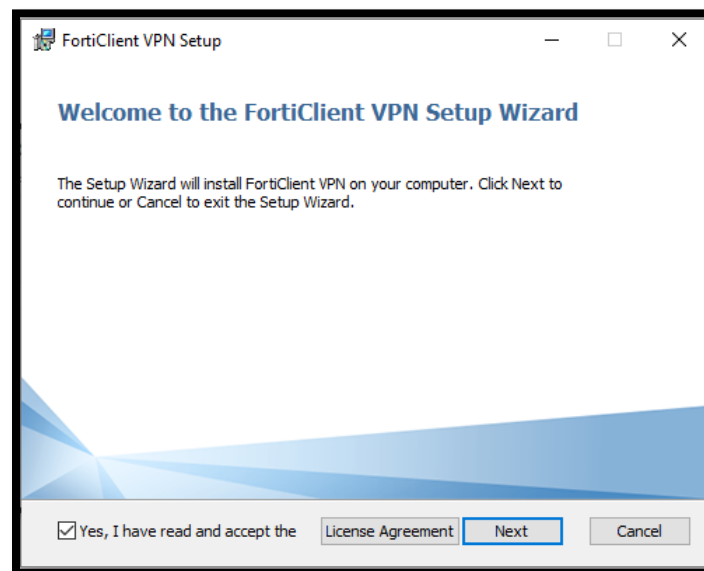
1. In order to connect, first navigate to the website of APS or LPA, from the top menu “**Quick Links**”, select “**Remote Access**”, you will find a set of these instructions, plus the Remote Desktop (RDP) file that you will need in order to login. Save these to your desktop for easy access.
2. You will first need to download a small piece of software, this is available for a range of operating systems, however we can only guarantee operability for Windows and MacOS:

Windows: <https://links.fortinet.com/forticlient/win/vpnagent>

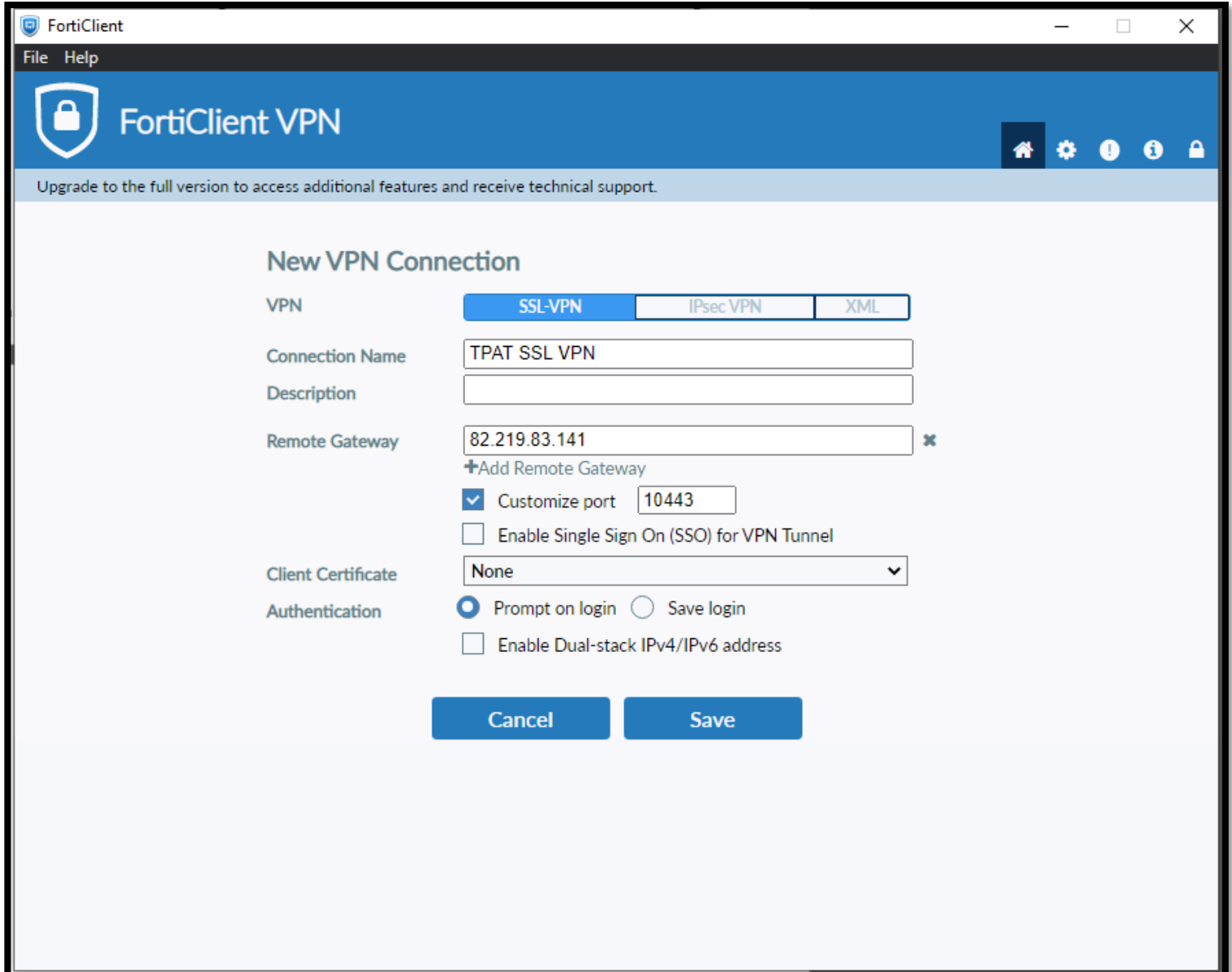
MacOS: <https://links.fortinet.com/forticlient/mac/vpnagent>

For MacOS users please note you will also need to download the Microsoft Remote Desktop app from the App Store.

3. Run the .EXE file and click next, then Install and wait for it to install on your pc, also make sure to tick the license agreement box.



- Once installed, find the app and open it, press the “Configure VPN”, this screen will then show, please put the details below into your screen, they should look exactly the same, then click “Save”.



FortiClient

File Help

FortiClient VPN

Upgrade to the full version to access additional features and receive technical support.

New VPN Connection

VPN: **SSL-VPN** | IPsec VPN | XML

Connection Name: TPAT SSL VPN

Description:

Remote Gateway: 82.219.83.141 ✕
+Add Remote Gateway

Customize port: 10443

Enable Single Sign On (SSO) for VPN Tunnel

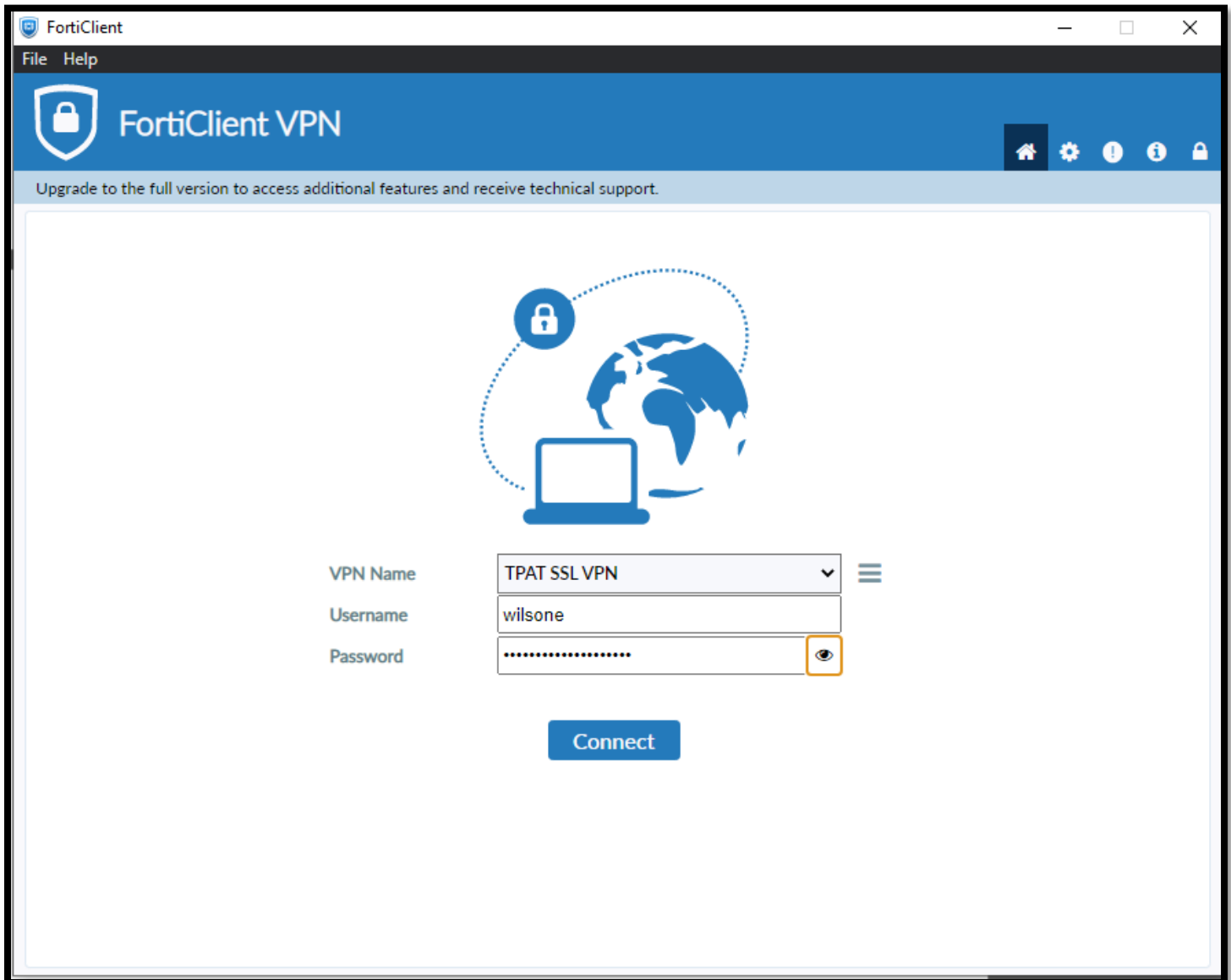
Client Certificate: None

Authentication: Prompt on login Save login

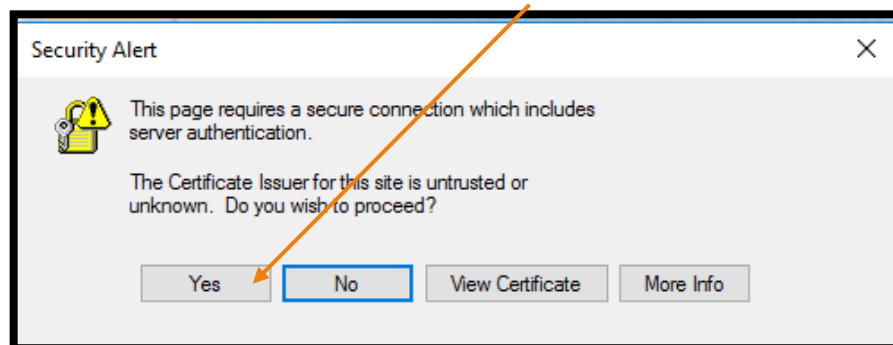
Enable Dual-stack IPv4/IPv6 address

Cancel Save

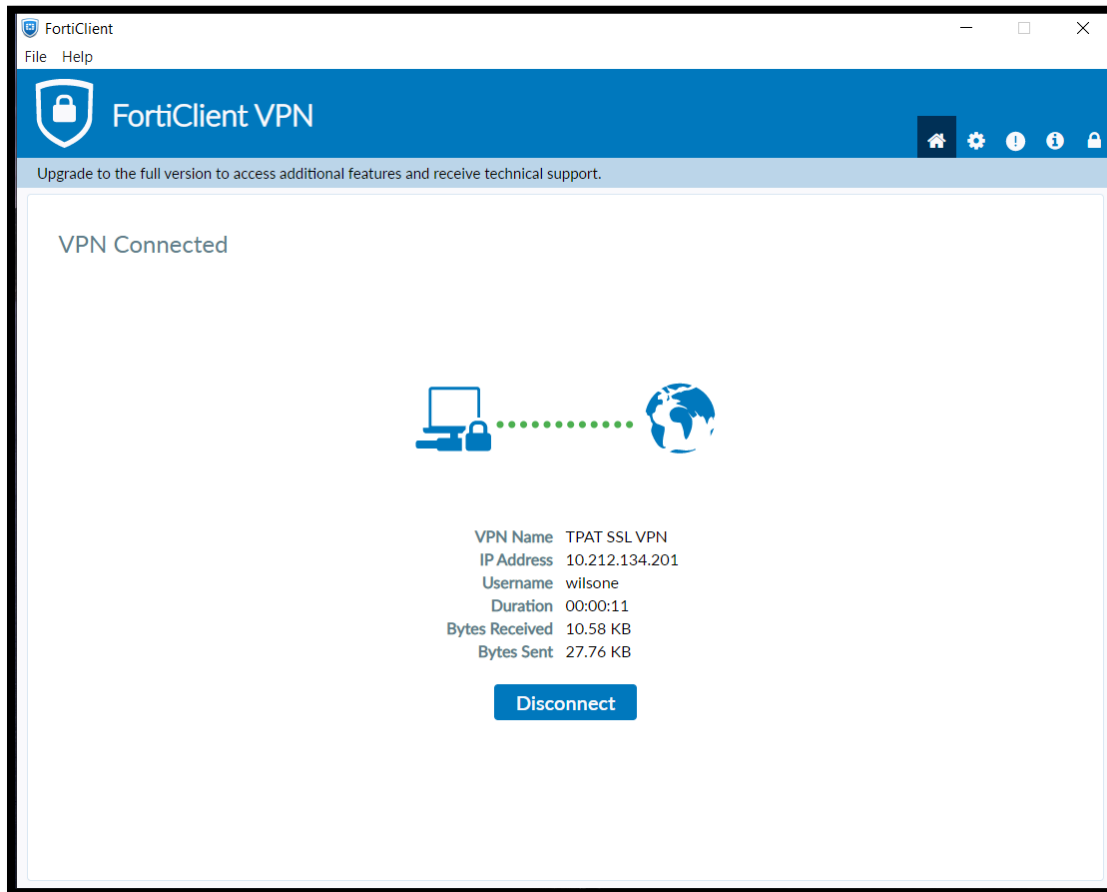
5. After you have saved it, it should now look like this, you now need to login using your account details, it'll be the same login you use to login to a school desktop with, but without the TPAT\ in front of it, for example see below.



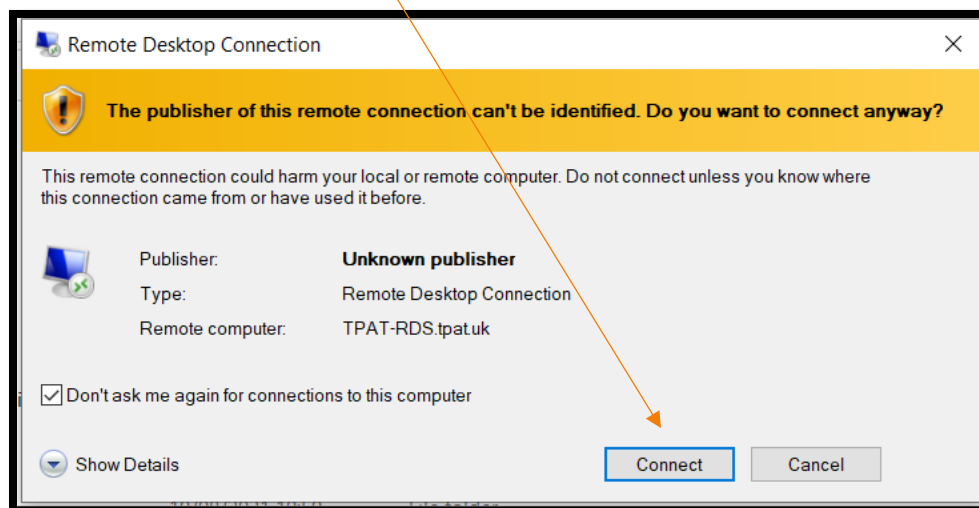
6. This popup may appear, if it does please click "Yes"



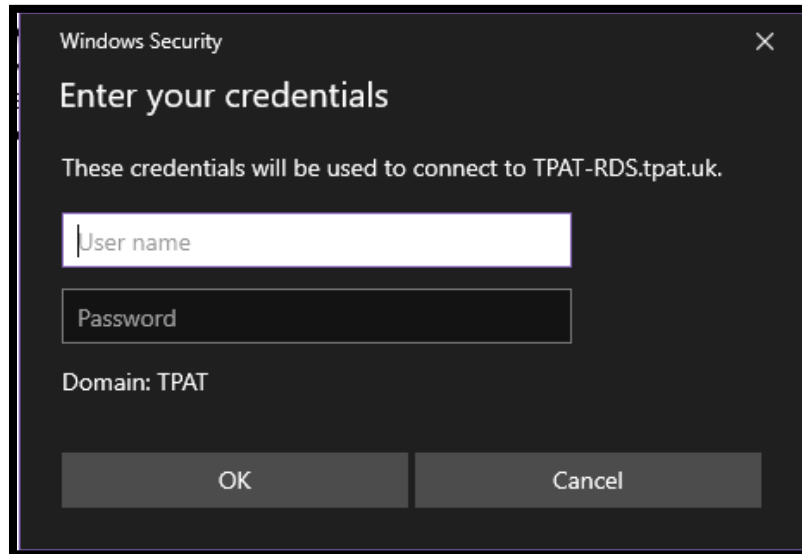
7. You should now be connected to the VPN (It'll look like the picture below), this now gives you access to login to the RDS.



8. You will see this prompt first when you open the file, please tick the "Don't ask again" box and then click "Connect"



- From here please enter your normal school login credentials and press “Ok”, that should then log you into the RDS.



- Once finished and you have logged out of RDS please remember to click on the “Disconnect” Button on the FortiClient app.

